

## Software Update

SiriusXM may occasionally release software updates for Commander Touch. It is recommended that you periodically check for a newer version, and update the software in your Commander Touch whenever a newer version is available.

## Determining the Software Version of your Commander Touch

You can determine whether your Commander Touch has the latest software by comparing the software version numbers of your Commander Touch to the version numbers of the latest software release from SiriusXM. The latest SiriusXM software version for Commander Touch is:

Display Controller: **V00.00.36**                      Tuner Baseband: **V11.42.01**  
 Tuner Micro: **V00.02.08**                      (Swipe up) NAND Image: **V00.00.25**

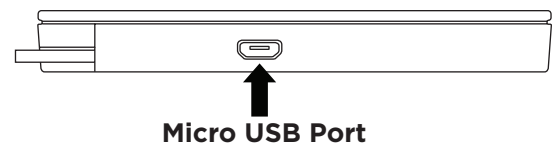
To check the software version of your Commander Touch, swipe to **Settings**, swipe up or down if necessary, tap the **About** button, and tap **Software Information**. If you find that any of the software version numbers listed above are higher numbered than the versions in your Commander Touch, you should update the software in your Commander Touch. For example, V00.00.36 is a newer software version than V00.00.26.

Software Information	
Display Controller	V00.00.36
Tuner Micro	V00.02.08
Tuner Baseband	V11.42.01
Software Information	
NAND Image	V00.00.25

## Prerequisites for a Software Update

Before you attempt to update the software in your Commander Touch, be sure you can meet the following prerequisites. If you cannot meet **all** of the prerequisites, do not attempt a software update. Instead, please consult a professional installer who can update the software for you, or call SiriusXM Listener Care at: **1-866-635-7191**. Prerequisites are:

1. You have one of the SiriusXM recommended USB Flash Drives. SiriusXM cannot guarantee that other USB Flash Drives will work. Refer to the last page for a list of SiriusXM approved USB Flash Drives.
2. You have a USB type A to Micro USB OTG adapter, or OTG adapter cable, if your USB Flash Drive has a USB type A connector. Although adapters will vary in appearance, a typical example of each type is shown to the right. OTG adapters can be purchased from most online electronics retailers.
3. You have the knowledge to download the software update file (or files) from the SiriusXM website, can extract the files from a ZIP archive, and copy them to your USB Flash Drive.
4. You can gain access to the micro USB port the bottom of the Commander Touch Display Controller. If your Display Controller has been installed using the Flush Mount, you will need the Release Tool to release the Display Controller from the Flush Mount.



If the Display Controller has been custom installed by a professional installer, and you cannot access the micro USB port, you may need to consult the installer to help you gain access to the micro USB port.

5. You have a minimum of up to 30 minutes of time to complete the software update. Once you begin the software update, the process cannot be interrupted.
6. You can provide uninterrupted power to your Commander Touch for the duration of the software update (up to 30 minutes).

## Software Update Instructions

**Commander Touch must remain on during the entire software update process. If power is interrupted during the software update process your Commander Touch will become damaged.**

1. Go to [www.siriusxm.com/commandertouch](http://www.siriusxm.com/commandertouch) and download the software update file. The file will be named **SXVCT1\_update\_v36.zip**, where **vXX** is the software version number.
2. Open the ZIP archive and extract the software update files to a folder on your computer. They will be named **SXVCT1\_N.XXX** and **SXVCT1\_F.XXX**.
3. Erase anything else that may be on your USB Flash Drive, and copy the **SXVCT1\_N.XXX** and **SXVCT1\_F.XXX** file to the root (top) directory of the USB Flash Drive. Do not put them in a folder on the drive.

4. You will need access to the USB port on the bottom of the Display Controller. If the Display Controller is mounted in the Flush Mount, remove the Display Controller from the Flush Mount using the Release Tool. Center the tool on the right side and press in between the Display Controller and the Flush Mount until the latch releases. (You may need to rock it gently from side to side slightly to release the latch.) Then pry the Display Controller out of the Flush Mount.

5. Turn your Commander Touch on. This may require you to turn the ignition in your vehicle to ACC to provide power to Commander Touch. Wait until Commander Touch is completely powered on.

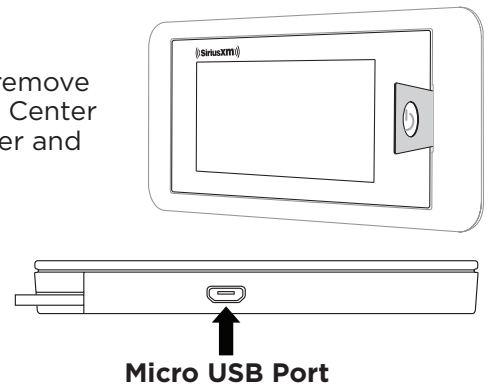
6. Connect the USB Flash Drive to the USB port on the bottom of the Commander Touch. Use the adapter or adapter cable, if necessary.

7. Swipe to **Settings**, swipe up or down if necessary, tap the **About** button, and swipe up to the second page. Tap **NAND Image Update**. You will be prompted to begin the software update. Tap **Update** to proceed.

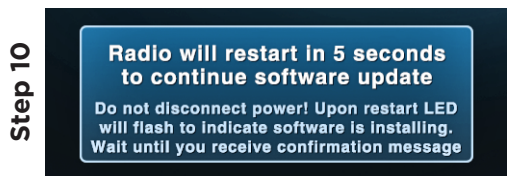
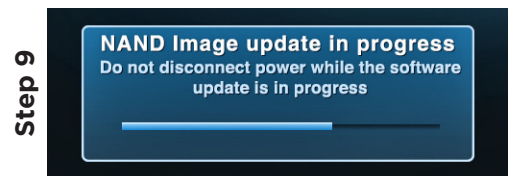
8. If there are any problems in reading the file on the USB Flash Drive, you will be alerted by an advisory message, and the software update will be aborted.

9. As the NAND image update is taking place, a progress bar will be displayed. The progress bar may advance, and then stop for a periods of time; this is normal. Wait until the update finishes.

10. When the NAND image update is finished, an advisory message will be displayed informing you that Commander Touch is going to restart to continue the update. As it restarts, the Power button may flash on and off several times; this is normal.



Select NAND Image Update

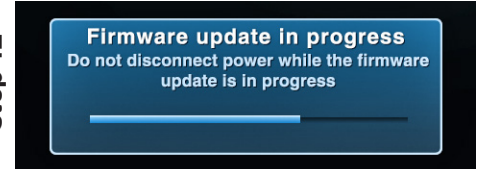


11. Once Commander Touch has restarted, an advisory will be displayed informing you that the firmware update is ready to be installed. Tap **Continue** to proceed.
12. As the firmware update is taking place, a progress bar will be displayed. The progress bar may advance, and then stop for a periods of time; this is normal. Wait until the update finishes.
13. When the firmware update is finished, an advisory message will be displayed informing you that Commander Touch is going to restart to continue and complete the update.
14. To verify the software update, swipe to **Settings**, swipe up or down if necessary, tap the **About** button, and tap **Software Information**.

Step 11



Step 12



Step 13



## SiriusXM Approved USB Flash Drives

The following is a list of flash drives which may be used for updating the software in your Commander Touch. SiriusXM does not recommend using a drive not in this list.

### OTG USB Flash Drives which do not require a OTG Adapter or OTG Adapter Cable:

Brand	Capacity	Drive Type	Product Name	Model No.
PNY	32 GB	OTG Drive	PNY - Duo-Link Metal OTG 32GB USB 2.0 Flash Drive	P-FDI32GOTGM-GE
SanDisk	64 GB	OTG Drive	SanDisk - Ultra 64GB Micro USB/USB 3.0 Flash Drive	SDDD2-064G-A46
SanDisk	32 GB	OTG Drive	SanDisk - Ultra 32GB Micro USB/USB 3.0 Flash Drive	SDDD2-032G-A46
SanDisk	16 GB	OTG Drive	SanDisk - Ultra 16GB Micro USB/USB 3.0 Flash Drive	SDDD2-016G-A46
Sony	32 GB	OTG Drive	Sony 32GB Microvault USB Flash Drive for Smartphone	USM32SA1/B
Sony	16 GB	OTG Drive	Sony 16GB Microvault USB Flash Drive for Smartphone	USM16SA1/B

### USB Flash Drives which require a OTG Adapter or OTG Adapter Cable:

Brand	Capacity	Drive Type	Product Name	Model No.
PNY	32 GB	Regular	PNY - Micro Metal Attaché 32GB USB 2.0 Flash Drive	P-FDI32G/APPMT2-GE
PNY	16 GB	Regular	PNY - Micro Metal Attaché 16GB USB Flash Drive	P-FDI16G/APPMT2-GE
Transcend	8 GB	Regular	Transcend 8GB JetFlash 500 USB 2.0 Flash Drive	TS8GJF500
SanDisk	16 GB	Regular	SanDisk 16GB 2.0 Flash Cruiser Glide USB Drive	DCZ60-016G-B35

Note that an OTG Adapter or OTG Adapter Cable can only be purchased from an online electronics retailer.